

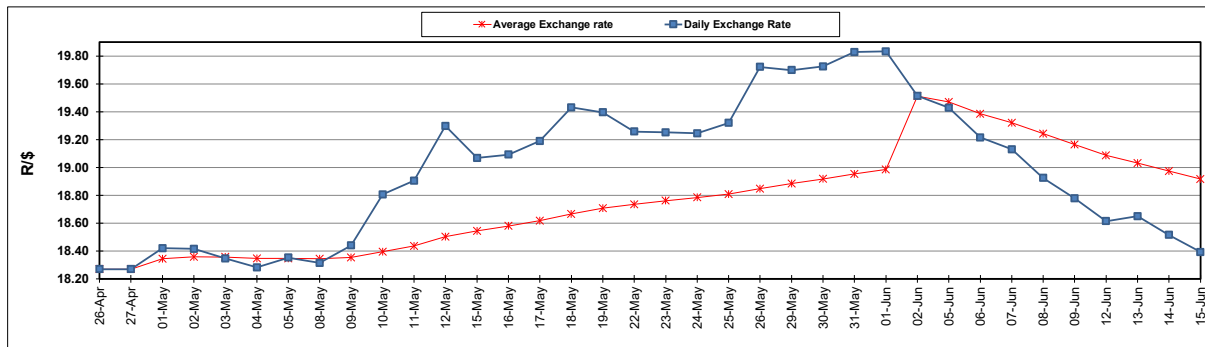
South African Cents per Litre (SA c/l)	PETROL 95 ULP	PETROL 93 ULP & LRP	DIESEL 0.05%	DIESEL 0.005%	ILL. PAR.
GAUTENG PUMP PRICE AS FROM 07/06/2023	2,263.000	2,230.000	-	-	-
WHOLESALE PRICE AS FROM 07/06/2023	-	-	1,931.290	1,969.690	1,396.058
SINGLE NATIONAL MAXIMUM RETAIL PRICE	-	-	-	-	1,801.000
BASIC FUEL PRICE - 15/06/2023	1,207.232	1,162.075	1,134.223	1,168.259	1,141.412
PRESS RELEASE CONTRIBUTION TO BFP 07/06/2023 - 15/06/2023	1,225.970	1,192.970	1,122.630	1,161.030	1,163.128
UNIT OVER/(UNDER) RECOVERY - 15/06/2023	18.738	30.895	(11.593)	(7.229)	21.716
AVERAGE BASIC FUEL PRICE 02/06/2023 - 15/06/2023	1,239.316	1,197.878	1,155.559	1,186.256	1,167.392
AVERAGE UNIT OVER/(UNDER) RECOVERY 02/06/2023 - 15/06/2023	7.654	16.092	(8.029)	(1.526)	8.636

ANALYSIS MOVEMENT OF AVERAGE OVER/(UNDER) RECOVERY

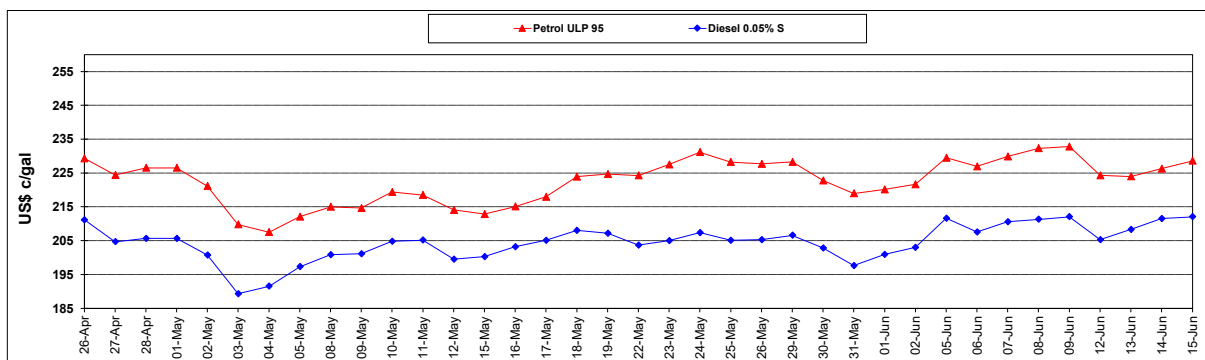
	PETROL 95	PETROL 93	DIESEL 0.05%	DIESEL 0.005%	ILL. PAR.
- MOVEMENT IN INTERNATIONAL PRODUCT PRICES	3.133	11.723	(12.244)	(5.853)	4.378
- MOVEMENT IN EXCHANGE RATE	4.521	4.369	4.215	4.327	4.258
AVERAGE UNIT OVER/(UNDER) RECOVERY 02/06/2023 - 15/06/2023	7.654	16.092	(8.029)	(1.526)	8.636

R/\$ EXCHANGE RATE - (R/\$18.3925 - 15/06/2023)

EXCHANGE RATE USED IN BASIC FUEL PRICE



INTERNATIONAL PRODUCT PRICES OF BASKET USED IN BASIC FUEL PRICE



BASIC FUEL PRICE IN SA CENTS PER LITRE

