

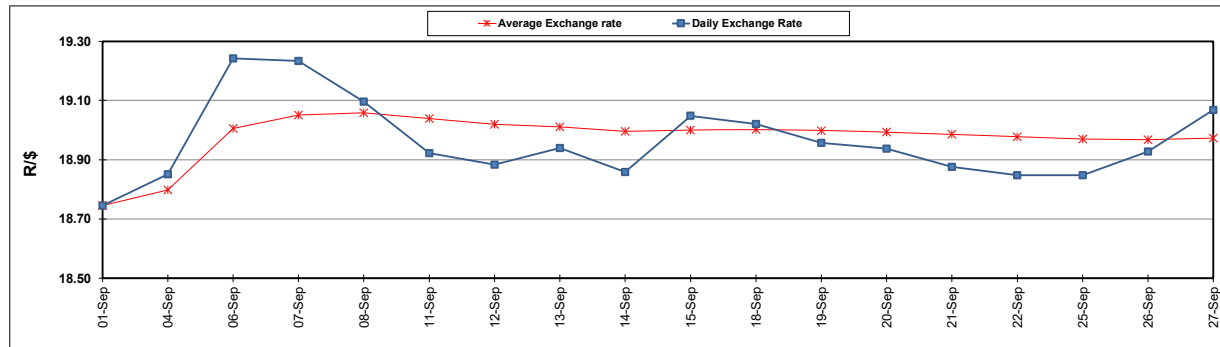
South African Cents per Litre (SA c/l)	PETROL 95 ULP	PETROL 93 ULP & LRP	DIESEL 0.05%	DIESEL 0.005%	ILL. PAR.
GAUTENG PUMP PRICE AS FROM 04/10/2023	2,568.000	2,522.000	-	-	-
WHOLESALE PRICE AS FROM 04/10/2023	-	-	2,501.990	2,522.390	1,892.058
SINGLE NATIONAL MAXIMUM RETAIL PRICE	-	-	-	-	2,463.000
BASIC FUEL PRICE - 29/09/2023	1,318.631	1,280.484	1,613.595	1,644.196	1,612.409
PRESS RELEASE CONTRIBUTION TO BFP 29/09/2023 - 29/09/2023	1,411.970	1,371.970	1,496.630	1,520.030	1,508.128
UNIT OVER/(UNDER) RECOVERY - 29/09/2023	93.339	91.486	(116.965)	(124.166)	(104.281)
AVERAGE BASIC FUEL PRICE 29/09/2023 - 29/09/2023	1,318.631	1,280.484	1,613.595	1,644.196	1,612.409
AVERAGE UNIT OVER/(UNDER) RECOVERY 29/09/2023 - 29/09/2023	93.339	91.486	(116.965)	(124.167)	(104.281)

ANALYSIS MOVEMENT OF AVERAGE OVER/(UNDER) RECOVERY

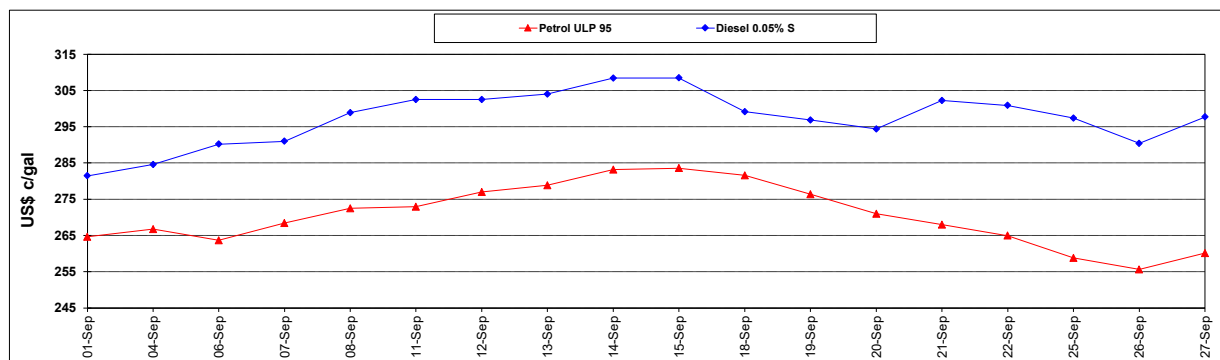
	PETROL 95	PETROL 93	DIESEL 0.05%	DIESEL 0.005%	ILL. PAR.
- MOVEMENT IN INTERNATIONAL PRODUCT PRICES	80.059	78.590	(133.216)	(140.725)	(120.520)
- MOVEMENT IN EXCHANGE RATE	13.280	12.896	16.251	16.559	16.239
AVERAGE UNIT OVER/(UNDER) RECOVERY 29/09/2023 - 29/09/2023	93.339	91.486	(116.965)	(124.167)	(104.281)

R/\$ EXCHANGE RATE - (R/\$18.7960 - 29/09/2023)

EXCHANGE RATE USED IN BASIC FUEL PRICE



INTERNATIONAL PRODUCT PRICES OF BASKET USED IN BASIC FUEL PRICE



BASIC FUEL PRICE IN SA CENTS PER LITRE

