

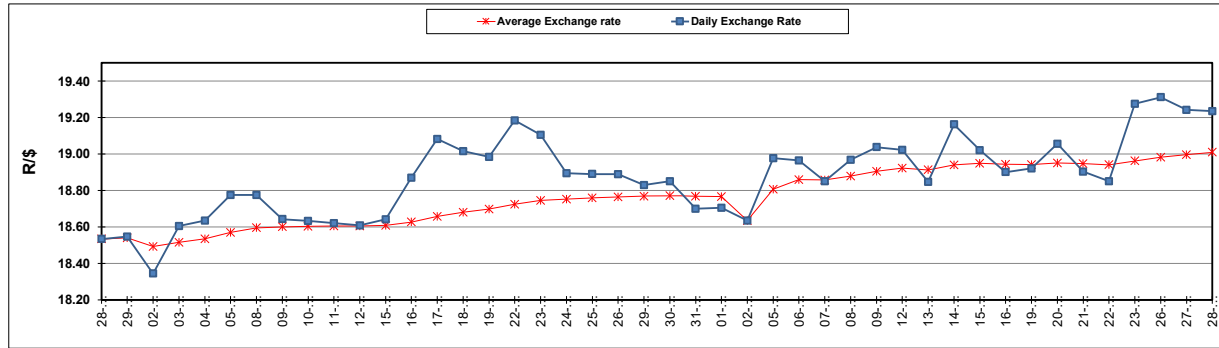
South African Cents per Litre (SA c/l)	PETROL 95 ULP	PETROL 93 ULP & LRP	DIESEL 0.05%	DIESEL 0.005%	ILL. PAR.
GAUTENG PUMP PRICE AS FROM 07/02/2024	2,324.000	2,292.000	-	-	-
WHOLESALE PRICE AS FROM 07/02/2024	-	-	2,136.170	2,142.570	1,583.938
SINGLE NATIONAL MAXIMUM RETAIL PRICE AS FROM 07/02/2024	-	-	-	-	2,052.000
BASIC FUEL PRICE - 28/02/2024	1,357.224	1,319.333	1,380.601	1,393.867	1,367.286
PRESS RELEASE CONTRIBUTION TO BFP 07/02/2024 - 28/02/2024	1,221.870	1,189.870	1,313.630	1,320.030	1,337.128
UNIT OVER/(UNDER) RECOVERY - 28/02/2024	(135.354)	(129.463)	(66.971)	(73.837)	(30.158)
AVERAGE BASIC FUEL PRICE 02/02/2024 - 28/02/2024	1,329.911	1,293.515	1,410.016	1,430.088	1,394.071
AVERAGE UNIT OVER/(UNDER) RECOVERY 02/02/2024 - 28/02/2024	(119.883)	(115.487)	(107.912)	(121.111)	(65.311)

ANALYSIS MOVEMENT OF AVERAGE OVER/(UNDER) RECOVERY

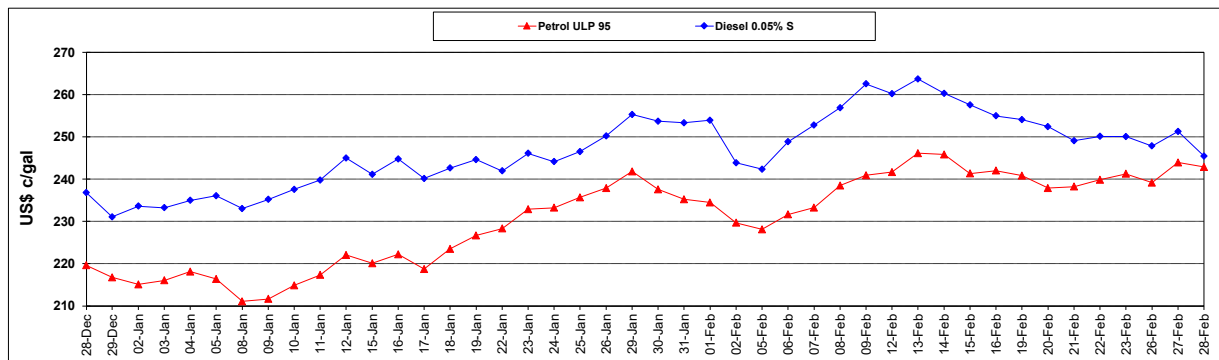
	PETROL 95	PETROL 93	DIESEL 0.05%	DIESEL 0.005%	ILL. PAR.
- MOVEMENT IN INTERNATIONAL PRODUCT PRICES	(102.820)	(98.891)	(89.821)	(102.762)	(47.424)
- MOVEMENT IN EXCHANGE RATE	(17.063)	(16.596)	(18.091)	(18.349)	(17.887)
AVERAGE UNIT OVER/(UNDER) RECOVERY 02/02/2024 - 28/02/2024	(119.883)	(115.487)	(107.912)	(121.111)	(65.311)

R/\$ EXCHANGE RATE - (R/\$19.2355 - 28/02/2024)

EXCHANGE RATE USED IN BASIC FUEL PRICE



INTERNATIONAL PRODUCT PRICES OF BASKET USED IN BASIC FUEL PRICE



BASIC FUEL PRICE IN SA CENTS PER LITRE

