

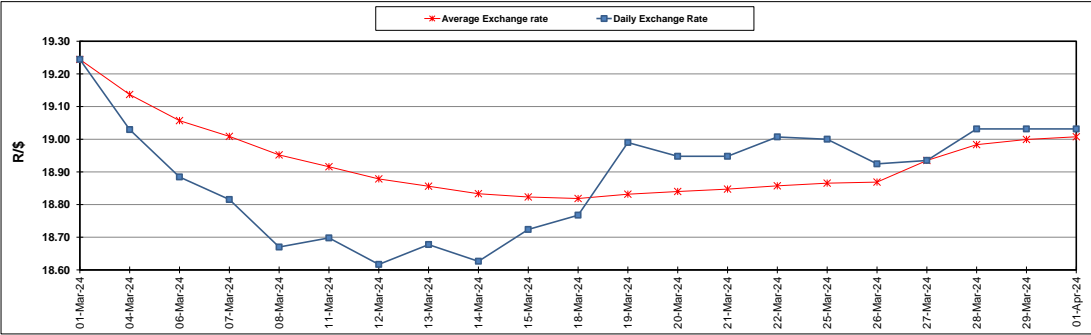
South African Cents per Litre (SA c/l)	PETROL 95 ULP	PETROL 93 ULP & LRP	DIESEL 0.05%	DIESEL 0.005%	ILL. PAR.
GAUTENG PUMP PRICE AS FROM 03/04/2024	2,512.000	2,478.000	-	-	-
WHOLESALE PRICE AS FROM 03/04/2024	-	-	2,245.090	2,259.490	1,618.938
SINGLE NATIONAL MAXIMUM RETAIL PRICE AS FROM 03/04/2024	-	-	-	-	2,079.000
BASIC FUEL PRICE - 01/04/2024	1,411.177	1,384.447	1,361.527	1,376.153	1,345.030
PRESS RELEASE CONTRIBUTION TO BFP 27/03/2024 - 01/04/2024	1,342.870	1,310.870	1,418.630	1,438.030	1,401.128
UNIT OVER/(UNDER) RECOVERY - 01/04/2024	(68.307)	(73.577)	57.103	61.877	56.098
AVERAGE BASIC FUEL PRICE 27/03/2024 - 01/04/2024	1,397.553	1,363.166	1,350.466	1,365.294	1,334.942
AVERAGE UNIT OVER/(UNDER) RECOVERY 27/03/2024 - 01/04/2024	(54.683)	(52.296)	68.164	72.736	66.186

ANALYSIS MOVEMENT OF AVERAGE OVER/(UNDER) RECOVERY

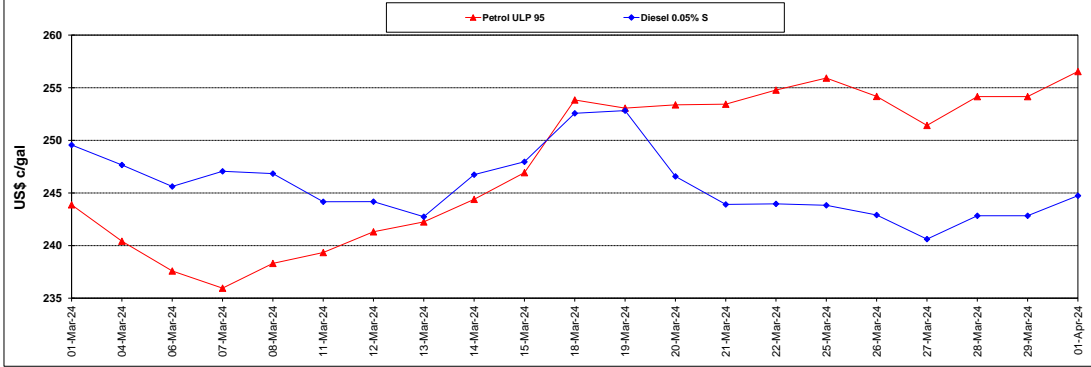
	PETROL 95	PETROL 93	DIESEL 0.05%	DIESEL 0.005%	ILL. PAR.
- MOVEMENT IN INTERNATIONAL PRODUCT PRICES	(44.500)	(42.363)	78.004	82.684	75.913
- MOVEMENT IN EXCHANGE RATE	(10.183)	(9.933)	(9.840)	(9.948)	(9.727)
AVERAGE UNIT OVER/(UNDER) RECOVERY 27/03/2024 - 01/04/2024	(54.683)	(52.296)	68.164	72.736	66.186

R/\$ EXCHANGE RATE - (R/\$19.0315 - 01/04/2024)

EXCHANGE RATE USED IN BASIC FUEL PRICE



INTERNATIONAL PRODUCT PRICES OF BASKET USED IN BASIC FUEL PRICE



BASIC FUEL PRICE IN SA CENTS PER LITRE

