

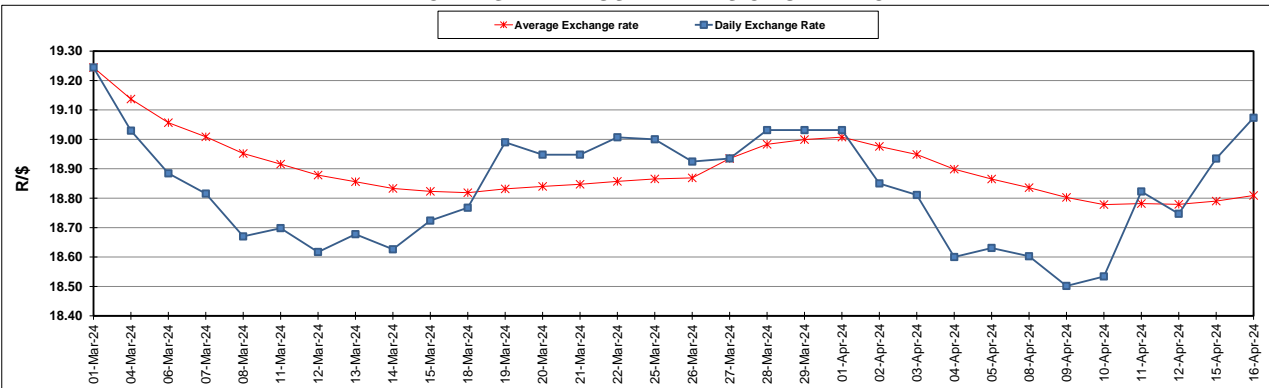
South African Cents per Litre (SA c/l)	PETROL 95 ULP	PETROL 93 ULP & LRP	DIESEL 0.05%	DIESEL 0.005%	ILL. PAR.
GAUTENG PUMP PRICE AS FROM 03/04/2024	2,512.000	2,478.000	-	-	-
WHOLESALE PRICE AS FROM 03/04/2024	-	-	2,245.090	2,259.490	1,618.938
SINGLE NATIONAL MAXIMUM RETAIL PRICE AS FROM 03/04/2024	-	-	-	-	2,079.000
BASIC FUEL PRICE - 16/04/2024	1,447.385	1,411.897	1,384.202	1,389.468	1,376.543
PRESS RELEASE CONTRIBUTION TO BFP 03/04/2024 - 16/04/2024	1,379.650	1,345.650	1,389.630	1,404.030	1,365.128
UNIT OVER/(UNDER) RECOVERY - 16/04/2024	(67.735)	(66.247)	5.428	14.562	(11.415)
AVERAGE BASIC FUEL PRICE 27/03/2024 - 16/04/2024	1,401.337	1,366.714	1,375.386	1,386.247	1,361.463
AVERAGE UNIT OVER/(UNDER) RECOVERY 27/03/2024 - 16/04/2024	(33.947)	(32.657)	23.911	29.116	15.665

ANALYSIS MOVEMENT OF AVERAGE OVER/(UNDER) RECOVERY

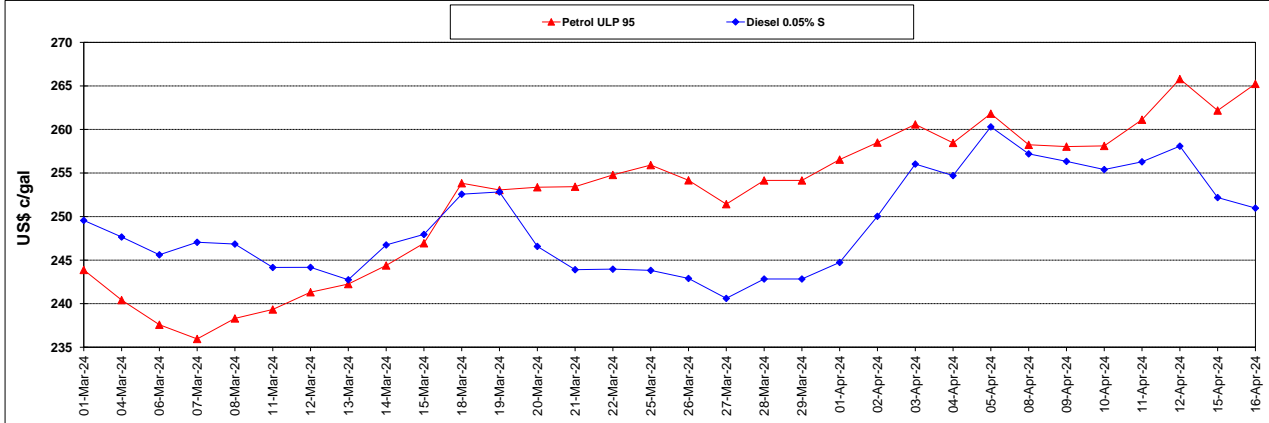
	PETROL 95	PETROL 93	DIESEL 0.05%	DIESEL 0.005%	ILL. PAR.
- MOVEMENT IN INTERNATIONAL PRODUCT PRICES	(38.402)	(37.002)	19.538	24.709	11.336
- MOVEMENT IN EXCHANGE RATE	4.455	4.345	4.373	4.407	4.329
AVERAGE UNIT OVER/(UNDER) RECOVERY 27/03/2024 - 16/04/2024	(33.947)	(32.657)	23.911	29.116	15.665

R/\$ EXCHANGE RATE - (R/\$19.0733 - 16/04/2024)

EXCHANGE RATE USED IN BASIC FUEL PRICE



INTERNATIONAL PRODUCT PRICES OF BASKET USED IN BASIC FUEL PRICE



BASIC FUEL PRICE IN SA CENTS PER LITRE

