

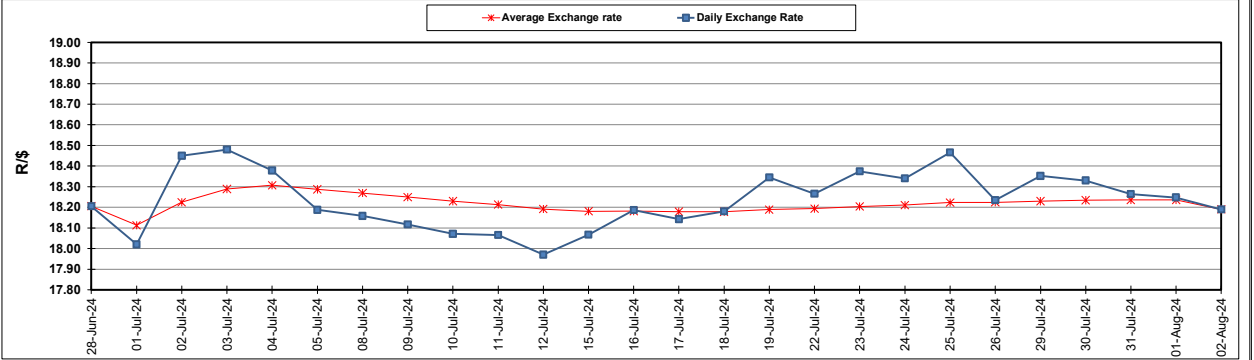
South African Cents per Litre (SA c/l)	PETROL 95 ULP	PETROL 93 ULP & LRP	DIESEL 0.05%	DIESEL 0.005%	ILL. PAR.
GAUTENG PUMP PRICE AS FROM 07/08/2024	2,311.000	2,271.000	-	-	-
WHOLESALE PRICE AS FROM 07/08/2024	-	-	2,038.170	2,073.570	1,479.938
SINGLE NATIONAL MAXIMUM RETAIL PRICE AS FROM 07/08/2024	-	-	-	-	1,894.000
BASIC FUEL PRICE - 02/08/2024	1,141.739	1,102.156	1,152.320	1,165.122	1,153.787
PRESS RELEASE CONTRIBUTION TO BFP 02/08/2024 - 02/08/2024	1,215.570	1,175.570	1,232.630	1,257.030	1,248.128
UNIT OVER/(UNDER) RECOVERY - 02/08/2024	73.831	73.414	80.310	91.908	94.341
AVERAGE BASIC FUEL PRICE 02/08/2024 - 02/08/2024	1,141.739	1,102.156	1,152.320	1,165.122	1,153.787
AVERAGE UNIT OVER/(UNDER) RECOVERY 02/08/2024 - 02/08/2024	73.831	73.414	80.310	91.908	94.341

ANALYSIS MOVEMENT OF AVERAGE OVER/(UNDER) RECOVERY

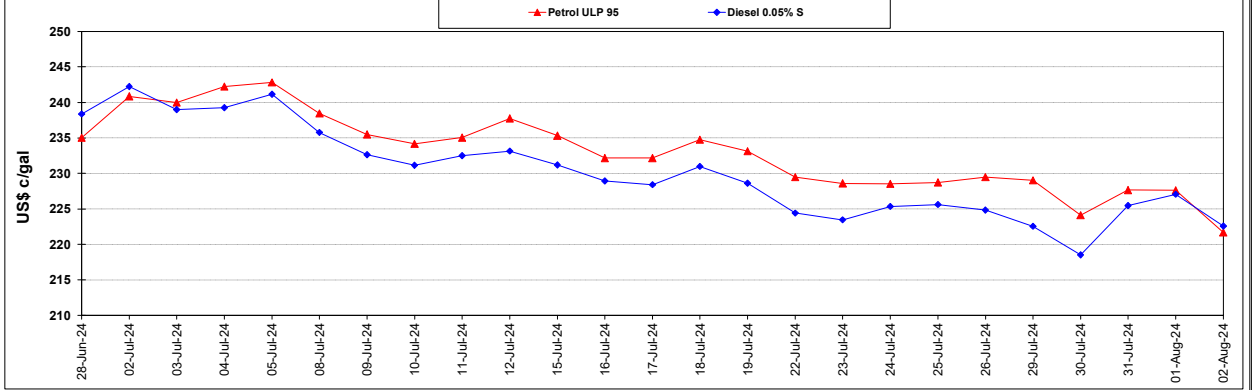
	PETROL 95	PETROL 93	DIESEL 0.05%	DIESEL 0.005%	ILL. PAR.
- MOVEMENT IN INTERNATIONAL PRODUCT PRICES	70.963	70.645	77.415	88.981	91.442
- MOVEMENT IN EXCHANGE RATE	2.868	2.769	2.895	2.927	2.899
AVERAGE UNIT OVER/(UNDER) RECOVERY 02/08/2024 - 02/08/2024	73.831	73.414	80.310	91.908	94.341

R/\$ EXCHANGE RATE - (R/\$18.1903 - 02/08/2024)

EXCHANGE RATE USED IN BASIC FUEL PRICE



INTERNATIONAL PRODUCT PRICES OF BASKET USED IN BASIC FUEL PRICE



BASIC FUEL PRICE IN SA CENTS PER LITRE

