

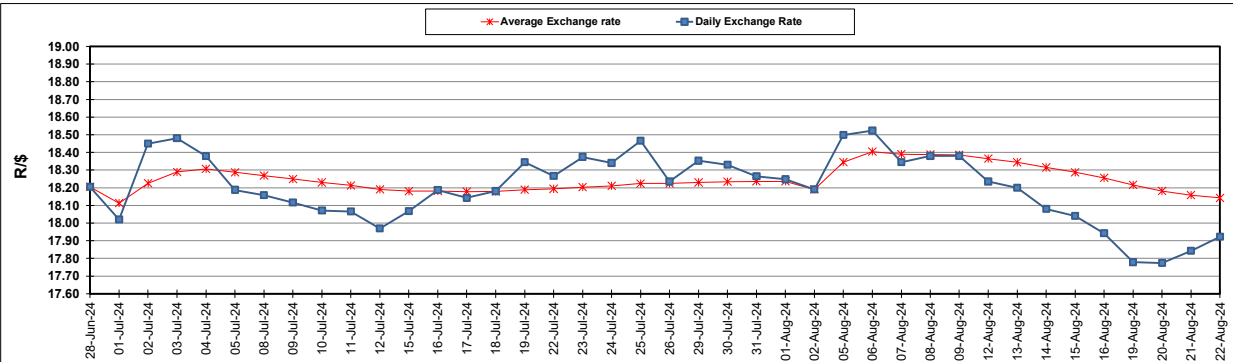
South African Cents per Litre (SA c/l)	PETROL 95 ULP	PETROL 93 ULP & LRP	DIESEL 0.05%	DIESEL 0.005%	ILL. PAR.
GAUTENG PUMP PRICE AS FROM 07/08/2024	2,311.000	2,271.000	-	-	-
WHOLESALE PRICE AS FROM 07/08/2024	-	-	2,038.170	2,073.570	1,479.938
SINGLE NATIONAL MAXIMUM RETAIL PRICE AS FROM 07/08/2024	-	-	-	-	1,894.000
BASIC FUEL PRICE - 22/08/2024	1,063.597	1,034.111	1,087.539	1,096.926	1,085.577
PRESS RELEASE CONTRIBUTION TO BFP 07/08/2024 - 22/08/2024	1,200.570	1,160.570	1,204.630	1,240.030	1,226.128
UNIT OVER/(UNDER) RECOVERY - 22/08/2024	136.973	126.459	117.091	143.104	140.551
AVERAGE BASIC FUEL PRICE 02/08/2024 - 22/08/2024	1,117.492	1,083.635	1,141.401	1,148.532	1,135.508
AVERAGE UNIT OVER/(UNDER) RECOVERY 02/08/2024 - 22/08/2024	86.078	79.935	68.829	94.898	95.020

ANALYSIS MOVEMENT OF AVERAGE OVER/(UNDER) RECOVERY

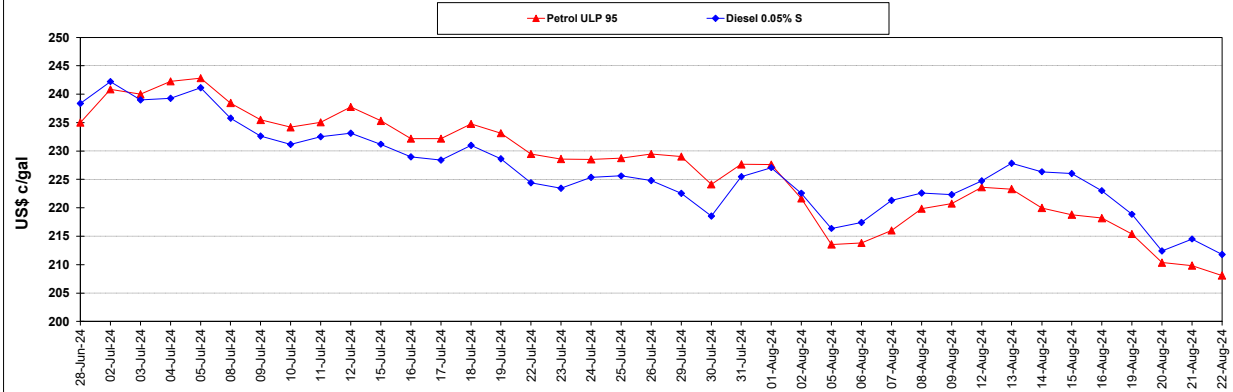
	PETROL 95	PETROL 93	DIESEL 0.05%	DIESEL 0.005%	ILL. PAR.
- MOVEMENT IN INTERNATIONAL PRODUCT PRICES	80.300	74.332	62.928	88.960	89.149
- MOVEMENT IN EXCHANGE RATE	5.778	5.603	5.901	5.938	5.871
AVERAGE UNIT OVER/(UNDER) RECOVERY 02/08/2024 - 22/08/2024	86.078	79.935	68.829	94.898	95.020

R/\$ EXCHANGE RATE - (R/\$17.9225 - 22/08/2024)

EXCHANGE RATE USED IN BASIC FUEL PRICE



INTERNATIONAL PRODUCT PRICES OF BASKET USED IN BASIC FUEL PRICE



BASIC FUEL PRICE IN SA CENTS PER LITRE

